

Service Manual

TV

CUC 1806
CUC 1829/1830
CUC 1929

M 55-280/8 A IDTV LOG
M 72-100 A
M 72-100/8 A
M 84-210/8 A IDTV LOG
Atlanta
SE 7220 IDTV/PIP

Grundig Service

Hotline Deutschland...
...Mo.-Fr. 8.00-16.30 Uhr

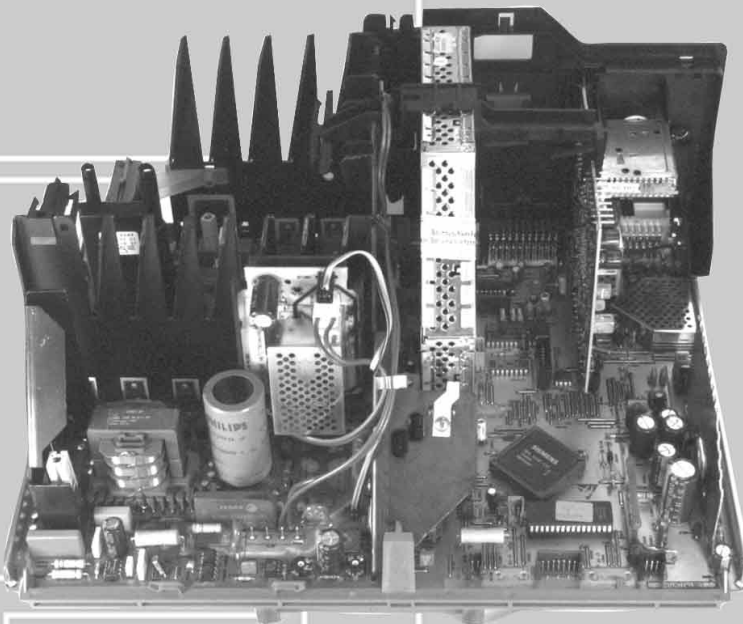
Technik:

TV/SAT	0180/52318-41
VCR/LiveCam	0180/52318-42
HiFi/Audio	0180/52318-43
Car Audio	0180/52318-44
Telekommunikation	0180/52318-45

Fax: 0180/52318-51

Ersatzteil-Bestellannahme:

Telefon:	0180/52318-40
Fax:	0180/52318-50



Zusätzlich erforderliche
Unterlagen für den Komplettservice

Additionally required
Service Manuals for the Complete Service

Service Manual

CUC 1806/1829
CUC 1830/1929

Sach-Nr./Part No.
72010-021.12

Service Manual

CUC 1828

Sach-Nr./Part No.
72010-021.10

Service Manual

Sicherheit
Safety

Sach-Nr./Part No.
72010-800.00

Service Training

CUC 1828

Sach-Nr./Part No.
72010-350.16

Btx * 32700 #

Sachnummer
Part Number 72010-021.12

Änderungen vorbehalten
Subject to alteration

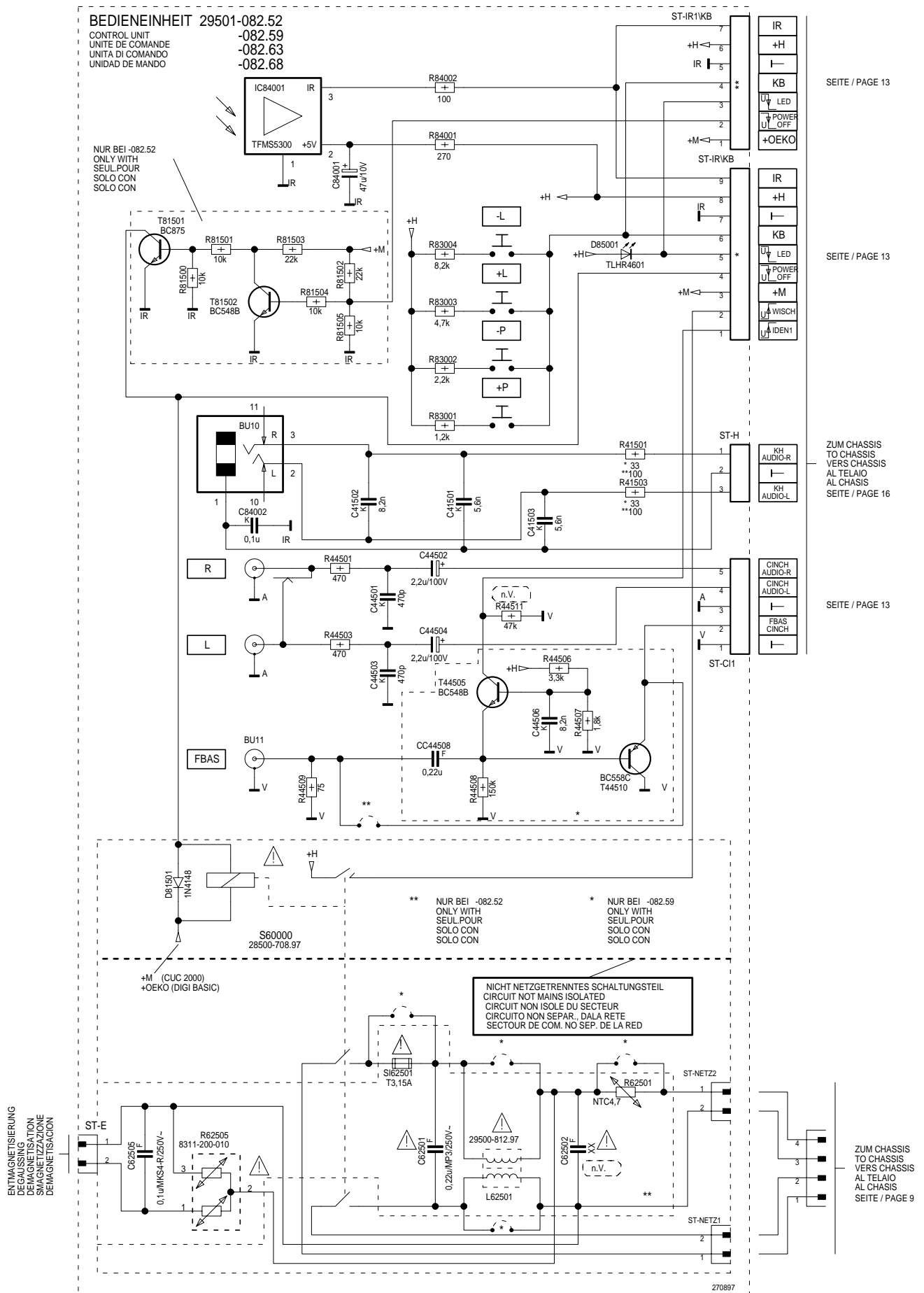
Printed in Germany
VK 24 1297

[illegible]

Top View of the Component Side of the PCB. The diagram shows the layout of components on the top surface of the board. Key components and labels include:

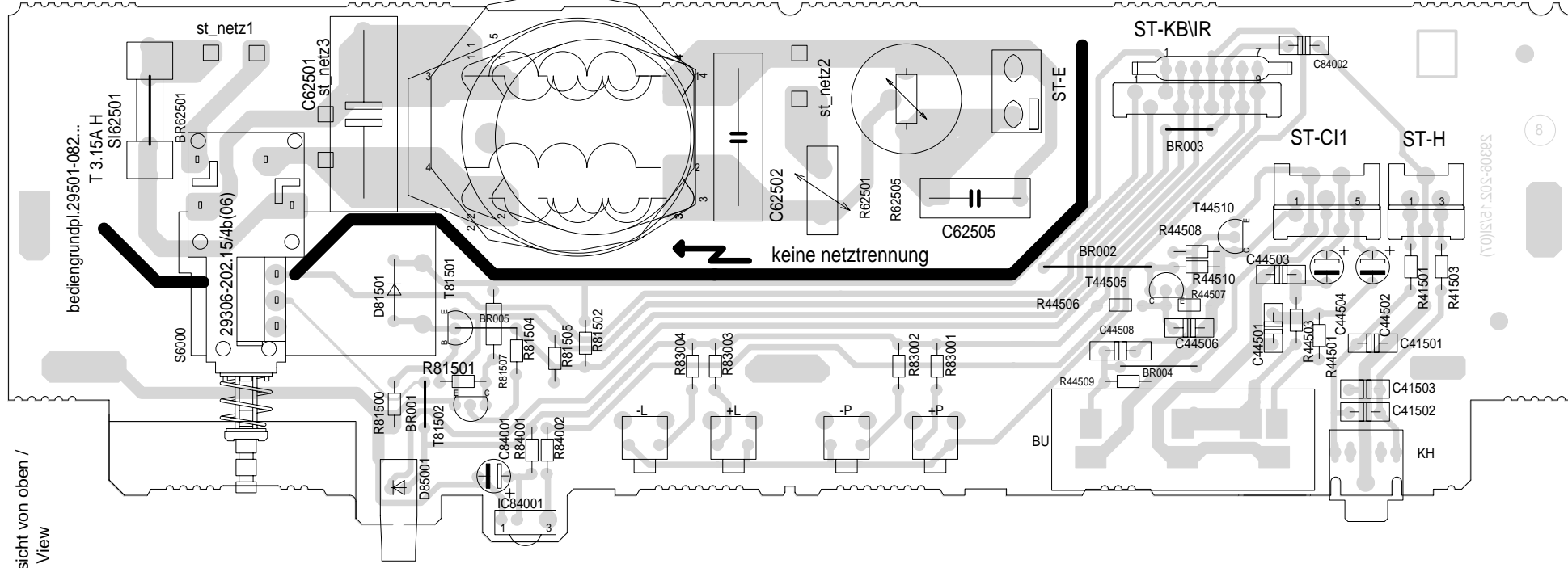
- Power Section (Bottom Left):** Includes a transformer (T3, 15AH), a fuse (F1), and a power switch (S60000). The power supply is labeled "netz 1".
- Control Section (Top Left):** Includes a potentiometer (P1), a variable capacitor (C62505), and a variable resistor (R62501). The power supply is labeled "netz 2".
- Resistors:** Labeled R81501, R81502, R81503, R81504, R81505, R84001, R84002, R84003, R84004, R84005, R84006, R84007, R84008, R84009, R84010, R84011, R84012, R84013, R84014, R84015, R84016, R84017, R84018, R84019, R84020, R84021, R84022, R84023, R84024, R84025, R84026, R84027, R84028, R84029, R84030, R84031, R84032, R84033, R84034, R84035, R84036, R84037, R84038, R84039, R84040, R84041, R84042, R84043, R84044, R84045, R84046, R84047, R84048, R84049, R84050, R84051, R84052, R84053, R84054, R84055, R84056, R84057, R84058, R84059, R84060, R84061, R84062, R84063, R84064, R84065, R84066, R84067, R84068, R84069, R84070, R84071, R84072, R84073, R84074, R84075, R84076, R84077, R84078, R84079, R84080, R84081, R84082, R84083, R84084, R84085, R84086, R84087, R84088, R84089, R84090, R84091, R84092, R84093, R84094, R84095, R84096, R84097, R84098, R84099, R84100, R84101, R84102, R84103, R84104, R84105, R84106, R84107, R84108, R84109, R84110, R84111, R84112, R84113, R84114, R84115, R84116, R84117, R84118, R84119, R84120, R84121, R84122, R84123, R84124, R84125, R84126, R84127, R84128, R84129, R84130, R84131, R84132, R84133, R84134, R84135, R84136, R84137, R84138, R84139, R84140, R84141, R84142, R84143, R84144, R84145, R84146, R84147, R84148, R84149, R84150, R84151, R84152, R84153, R84154, R84155, R84156, R84157, R84158, R84159, R84160, R84161, R84162, R84163, R84164, R84165, R84166, R84167, R84168, R84169, R84170, R84171, R84172, R84173, R84174, R84175, R84176, R84177, R84178, R84179, R84180, R84181, R84182, R84183, R84184, R84185, R84186, R84187, R84188, R84189, R84190, R84191, R84192, R84193, R84194, R84195, R84196, R84197, R84198, R84199, R84200, R84201, R84202, R84203, R84204, R84205, R84206, R84207, R84208, R84209, R84210, R84211, R84212, R84213, R84214, R84215, R84216, R84217, R84218, R84219, R84220, R84221, R84222, R84223, R84224, R84225, R84226, R84227, R84228, R84229, R84230, R84231, R84232, R84233, R84234, R84235, R84236, R84237, R84238, R84239, R84240, R84241, R84242, R84243, R84244, R84245, R84246, R84247, R84248, R84249, R84250, R84251, R84252, R84253, R84254, R84255, R84256, R84257, R84258, R84259, R84260, R84261, R84262, R84263, R84264, R84265, R84266, R84267, R84268, R84269, R84270, R84271, R84272, R84273, R84274, R84275, R84276, R84277, R84278, R84279, R84280, R84281, R84282, R84283, R84284, R84285, R84286, R84287, R84288, R84289, R84290, R84291, R84292, R84293, R84294, R84295, R84296, R84297, R84298, R84299, R84300, R84301, R84302, R84303, R84304, R84305, R84306, R84307, R84308, R84309, R84310, R84311, R84312, R84313, R84314, R84315, R84316, R84317, R84318, R84319, R84320, R84321, R84322, R84323, R84324, R84325, R84326, R84327, R84328, R84329, R84330, R84331, R84332, R84333, R84334, R84335, R84336, R84337, R84338, R84339, R84340, R84341, R84342, R84343, R84344, R84345, R84346, R84347, R84348, R84349, R84350, R84351, R84352, R84353, R84354, R84355, R84356, R84357, R84358, R84359, R84360, R84361, R84362, R84363, R84364, R84365, R84366, R84367, R84368, R84369, R84370, R84371, R84372, R84373, R84374, R84375, R84376, R84377, R84378, R84379, R84380, R84381, R84382, R84383, R84384, R84385, R84386, R84387, R84388, R84389, R84390, R84391, R84392, R84393, R84394, R84395, R84396, R84397, R84398, R84399, R84400, R84401, R84402, R84403, R84404, R84405, R84406, R84407, R84408, R84409, R84410, R84411, R84412, R84413, R84414, R84415, R84416, R84417, R84418, R84419, R84420, R84421, R84422, R84423, R84424, R84425, R84426, R84427, R84428, R84429, R84430, R84431, R84432, R84433, R84434, R84435, R84436, R84437, R84438, R84439, R84440, R84441, R84442, R84443, R84444, R84445, R84446, R84447, R84448, R84449, R84450, R84451, R84452, R84453, R84454, R84455, R84456, R84457, R84458, R84459, R84460, R84461, R84462, R84463, R84464, R84465, R84466, R84467, R84468, R84469, R84470, R84471, R84472, R84473, R84474, R84475, R84476, R84477, R84478, R84479, R84480, R84481, R84482, R84483, R84484, R84485, R84486, R84487, R84488, R84489, R84490, R84491, R84492, R84493, R84494, R84495, R84496, R84497, R84498, R84499, R84500, R84501, R84502, R84503, R84504, R84505, R84506, R84507, R84508, R84509, R84510, R84511, R84512, R84513, R84514, R84515, R84516, R84517, R84518, R84519, R84520, R84521, R84522, R84523, R84524, R84525, R84526, R84527, R84528, R84529, R84530, R84531, R84532, R84533, R84534, R84535, R84536, R84537, R84538, R84539, R84540, R84541, R84542, R84543, R84544, R84545, R84546, R84547, R84548, R84549, R84550, R84551, R84552, R84553, R

Bedieneinheit / Control Unit 29501-082.68

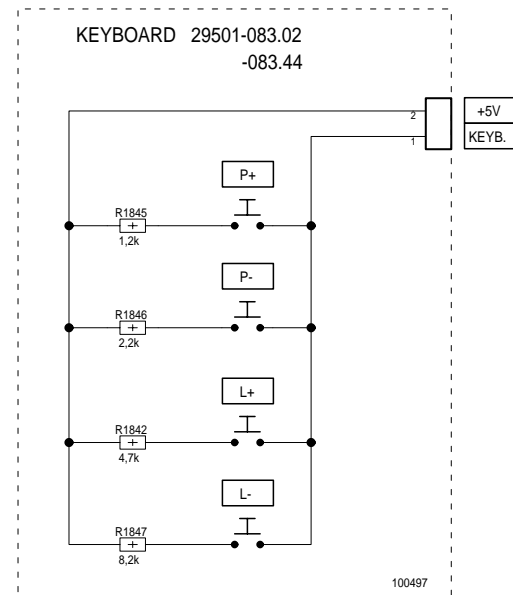


Bedieneinheit / Control Unit 29501-082.68

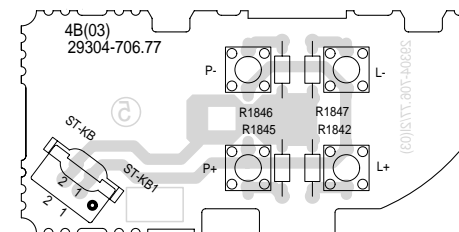
Bestückungsseite, Ansicht von oben /
Component Side, Top View



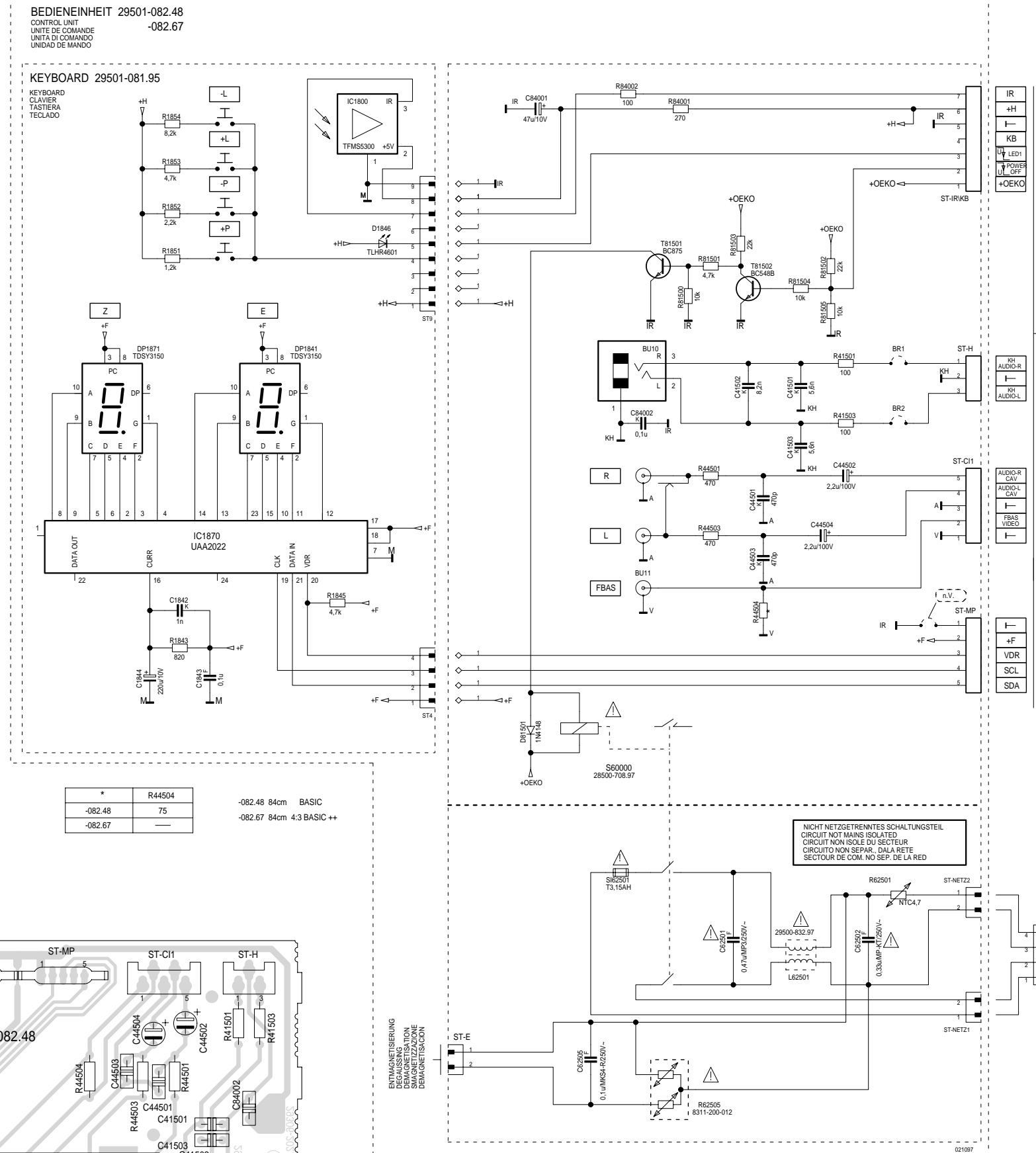
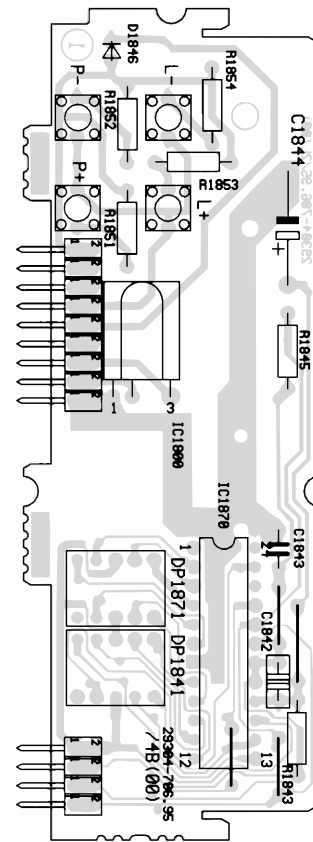
Bedieneinheit / Control Unit 29501-082.67



**Bestückungsseite, Ansicht von oben /
Component Side, Top View**

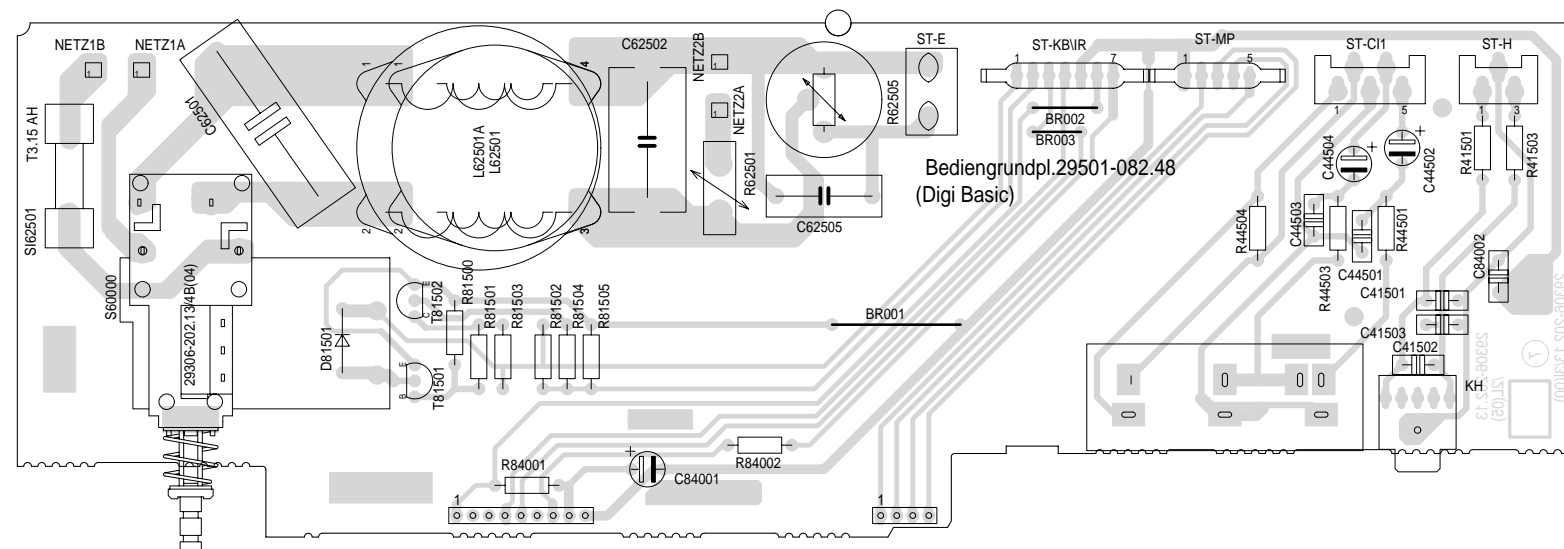


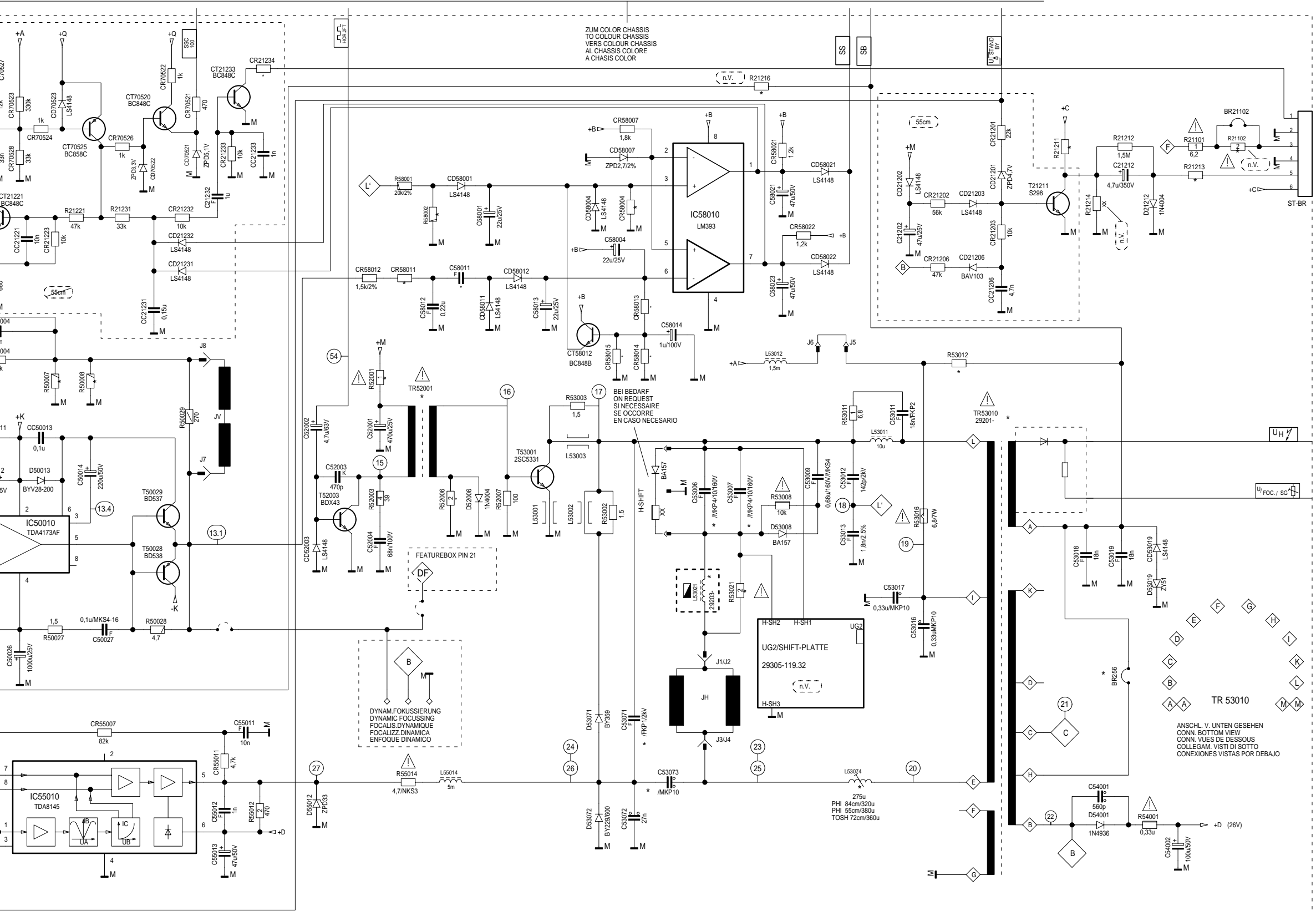
**Bestückungsseite, Ansicht von oben /
Component Side, Top View**



Bedieneinheit / Control Unit 29501-082.67

Bestückungsseite, Ansicht von oben / Component Side, Top View



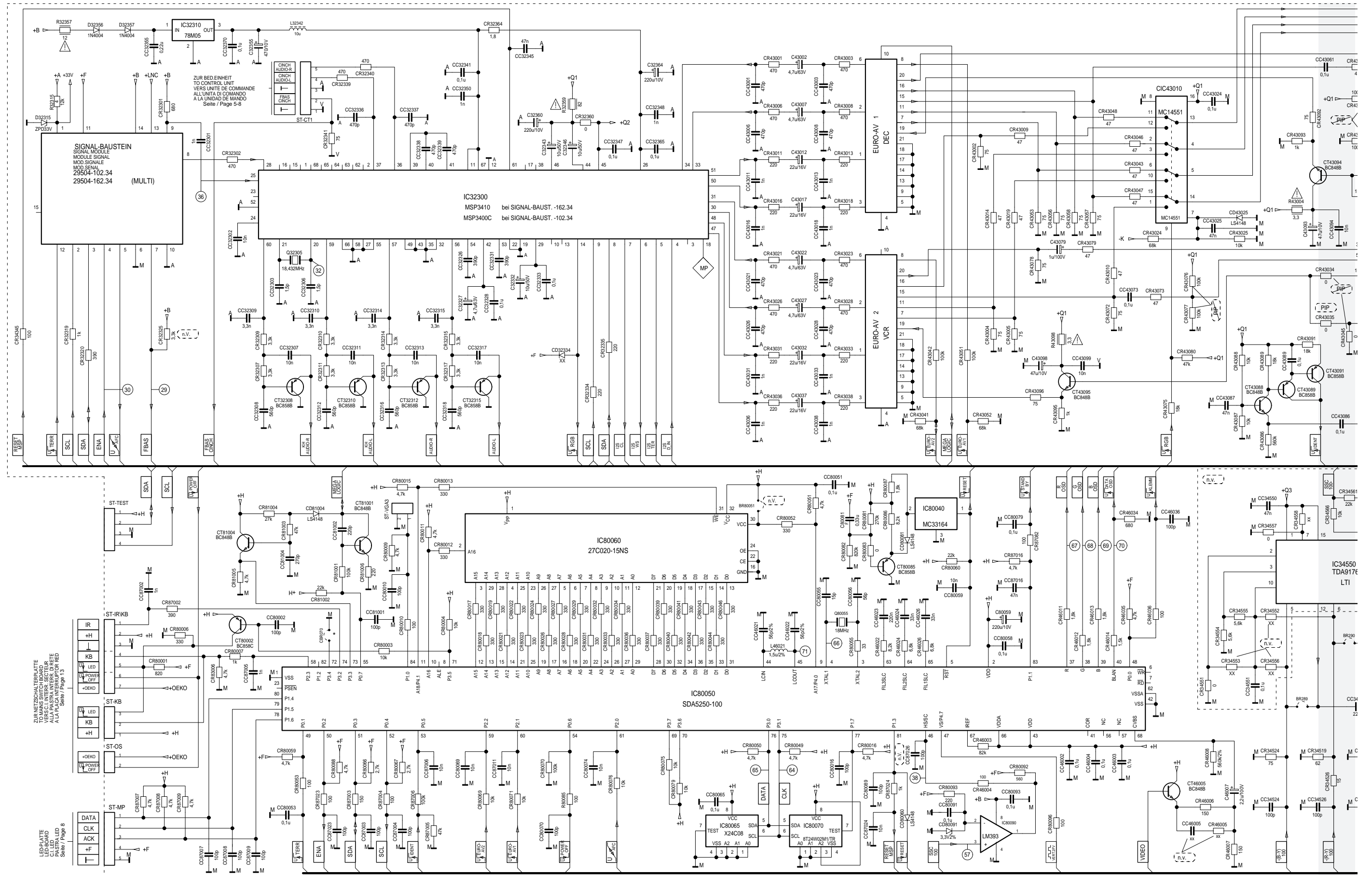


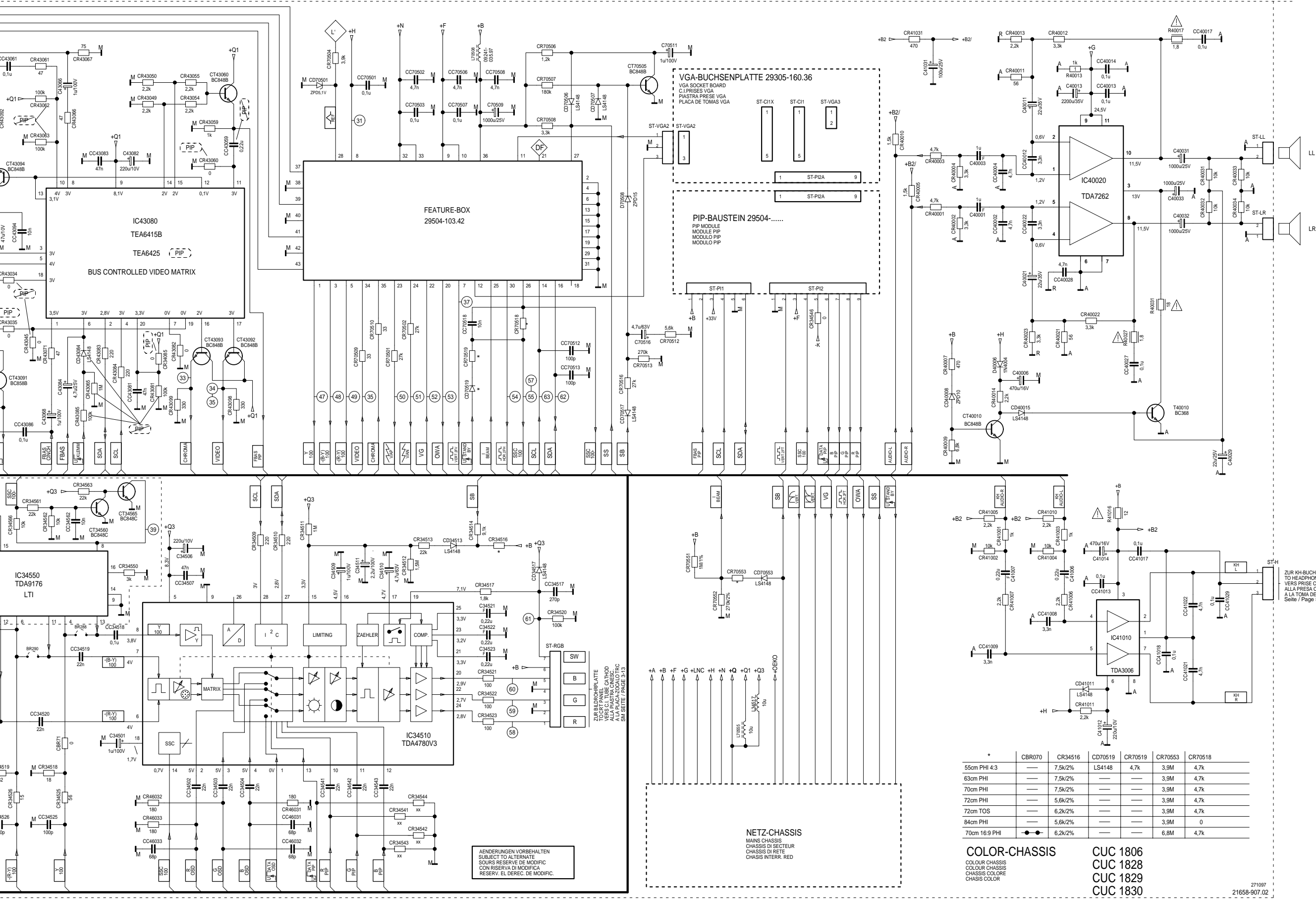
ZUR BILDROHRPLATTE
TO CART. TUBE CATHOD
ALL. TUBO CATHOD
A LA PLACA ZCND TRC
SM SETTE / PAGE 3-13

C53071	C53073	L53074	R58002	CR58004	CR58011	TR60001	R52001	L53021	CD55003	R61314	C60028	C58011	CR58013	CR58014	CR58015	TR52001	CR21234	CR21234
6,8n	0,47u	859.65	3k/2%	13k/2%	1,5k/2%	-569.97	33/2W	-119	ZPD4,3V/2%	10k	220u	0,47u	8,2k	18k	18k	09245-812.31	—	—
13,5n	0,68u	859.63	3,6k/1%	12k/2%	1,2k/2%	-573.97	4,7/1W	-122	ZPD4,3V/2%	15k	300u	0,56u	10k/2%	8,2k/2%	—	09246-867.04	390	560k/1%
13n	0,68u	859.55	3,9k/2%	12k/2%	1,8k/2%	-568.97	4,7/1W	-122	ZPD3,9V/2%	10k	300u	0,47u	8,2k	18k	18k	09246-867.04	390	560k/1%
11,5n	0,68u	859.63	3,3k/2%	12k/2%	1,2k/2%	-569.97	8,2/1W	-122	ZPD4,3V/2%	15k	300u	0,56u	8,2k	18k	18k	09246-867.04	220	560k/1%

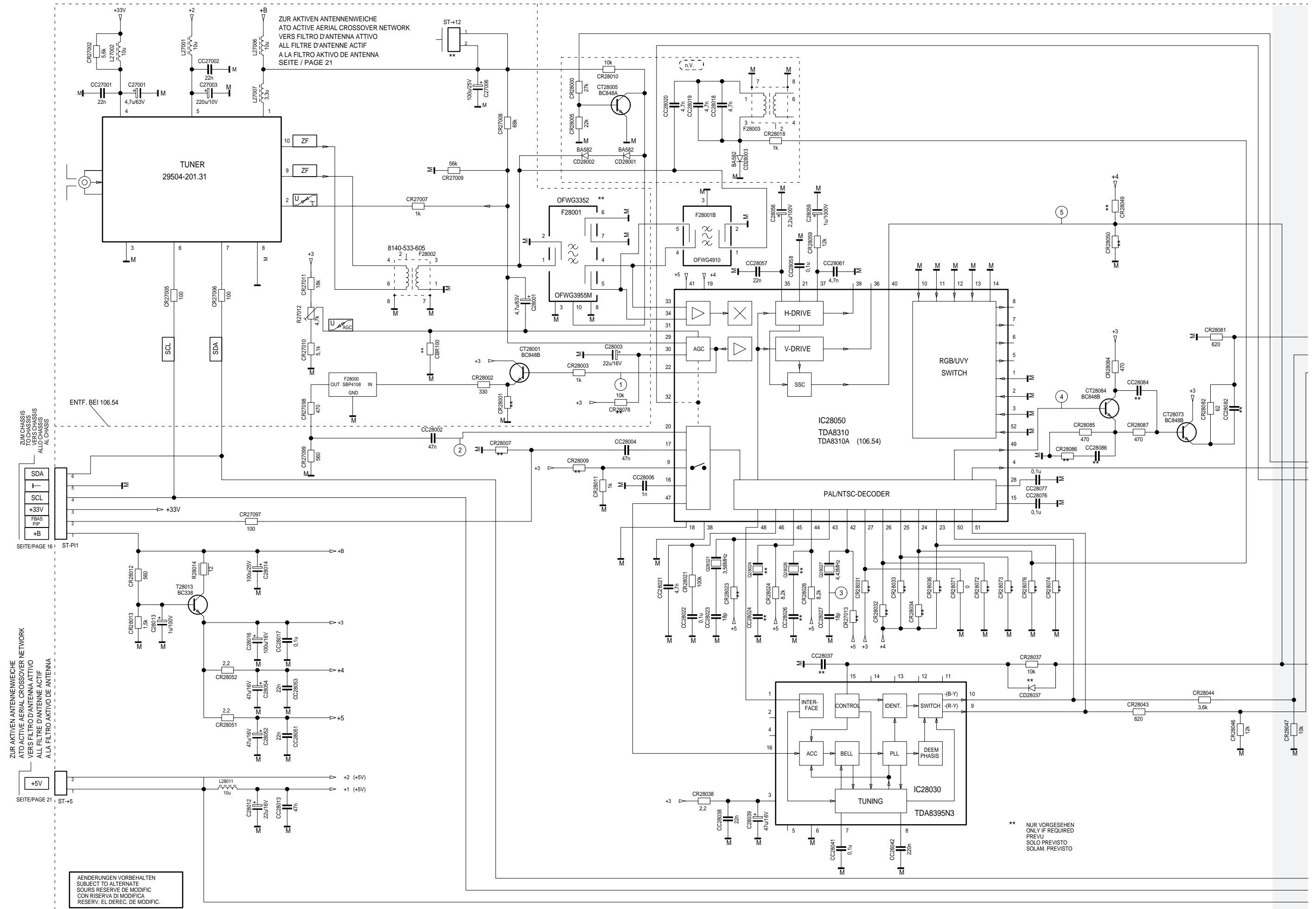
Color-Chassis / Colour-Chassis

Oszillogramme SM Seite 3-1/2
Oscillograms SM Page 3-1/2

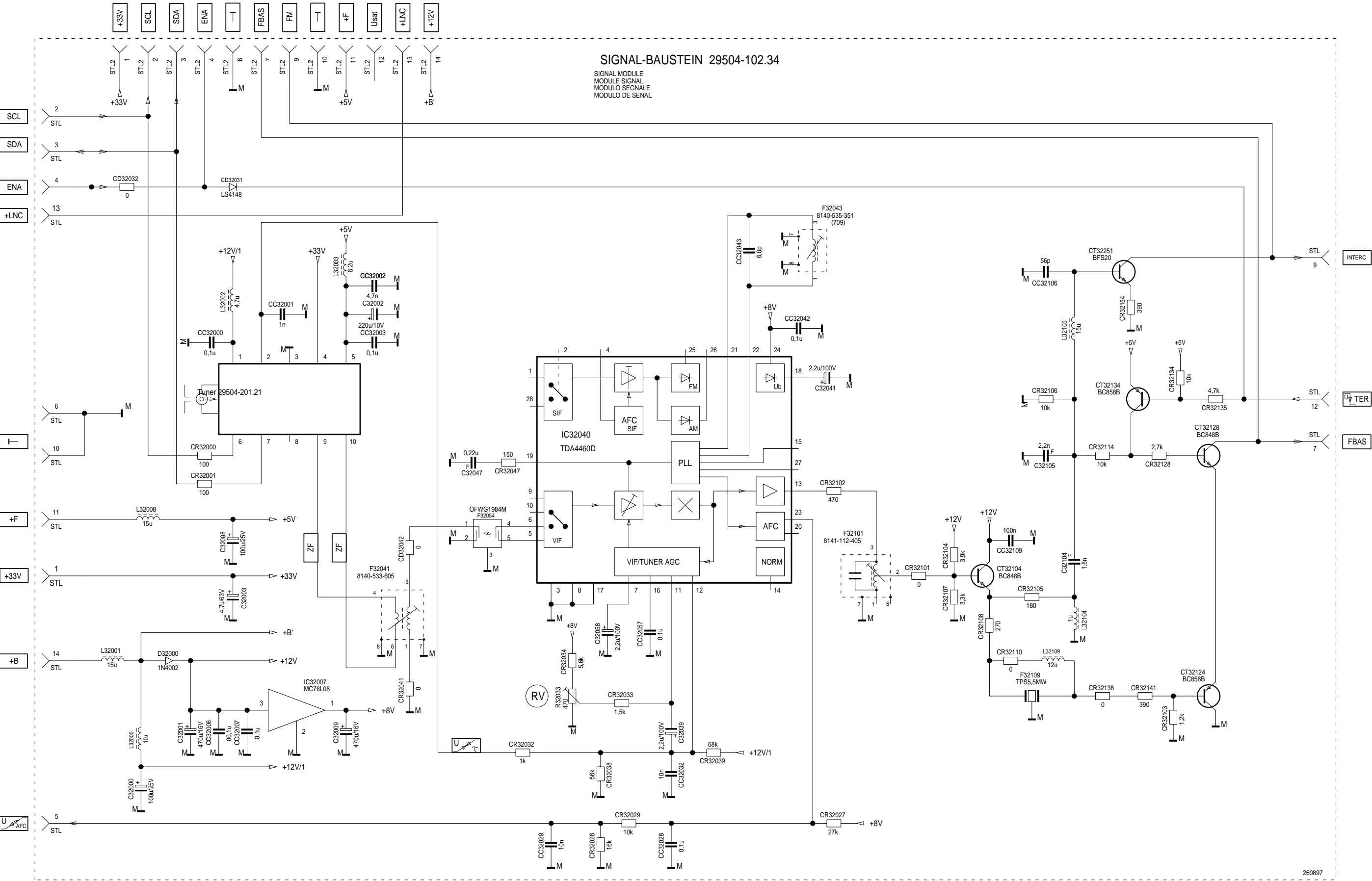




PIP-Baustein / PIP Module 29524-106.54

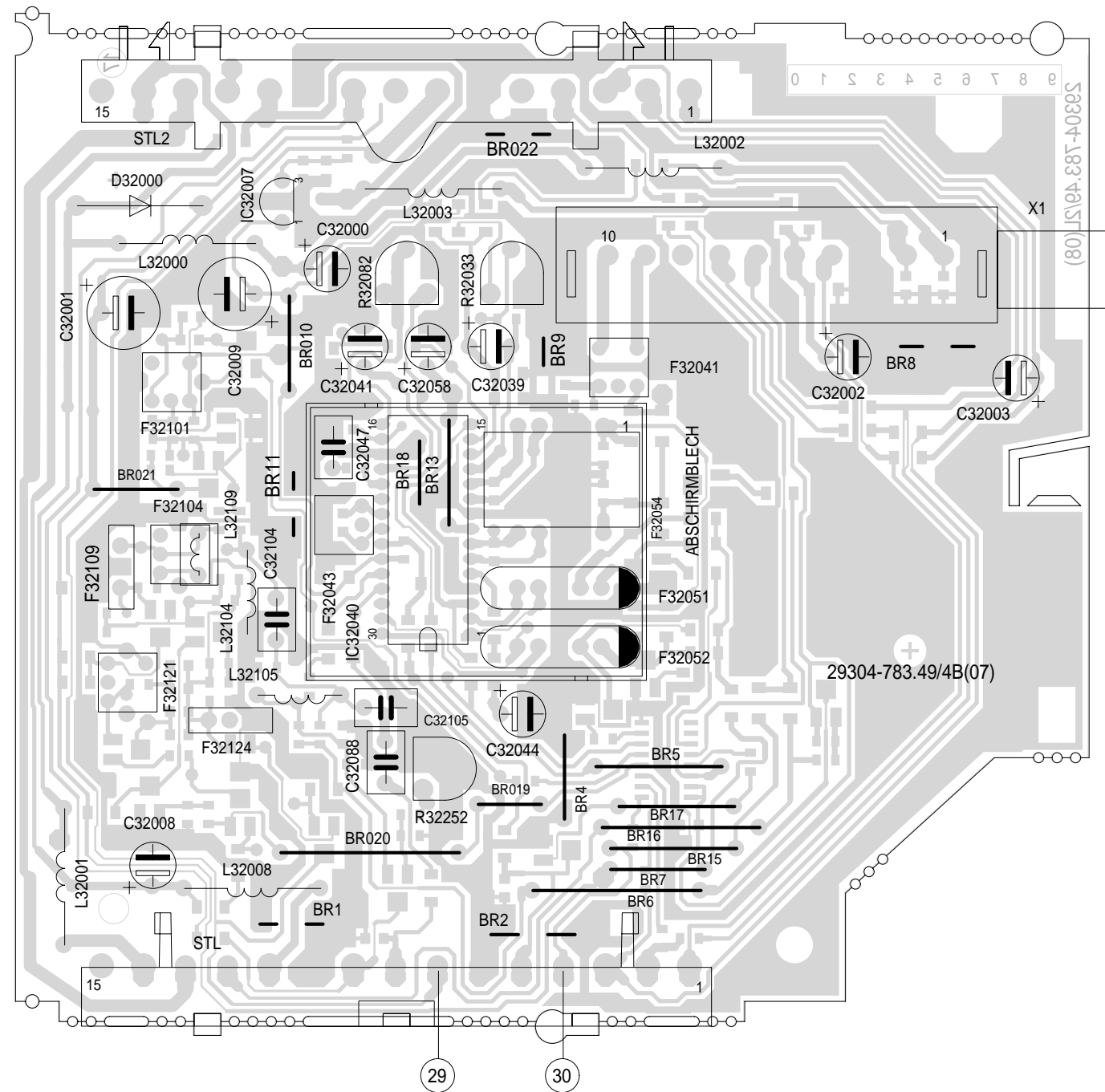


Signalbaustein / Signal Module 29504-102.34



Signal-Baustein / Signal Module

Bestückungsseite, Ansicht von oben / Component Side, Top View



Lötseite, Ansicht von unten / Solder Side, Bottom View

